

- LOTTE DISPONIBILI PER ATTIVITA' PRODUTTIVE: area coperta
- LOTTE DISPONIBILI PER ATTIVITA' PRODUTTIVE: area scoperta
- LOTTE DISPONIBILI PER USO UFFICIO: area coperta



## PLANIMETRIA

Copyright © 2004 John Wiley & Sons, Inc.

PIANTA PIANO TERRA



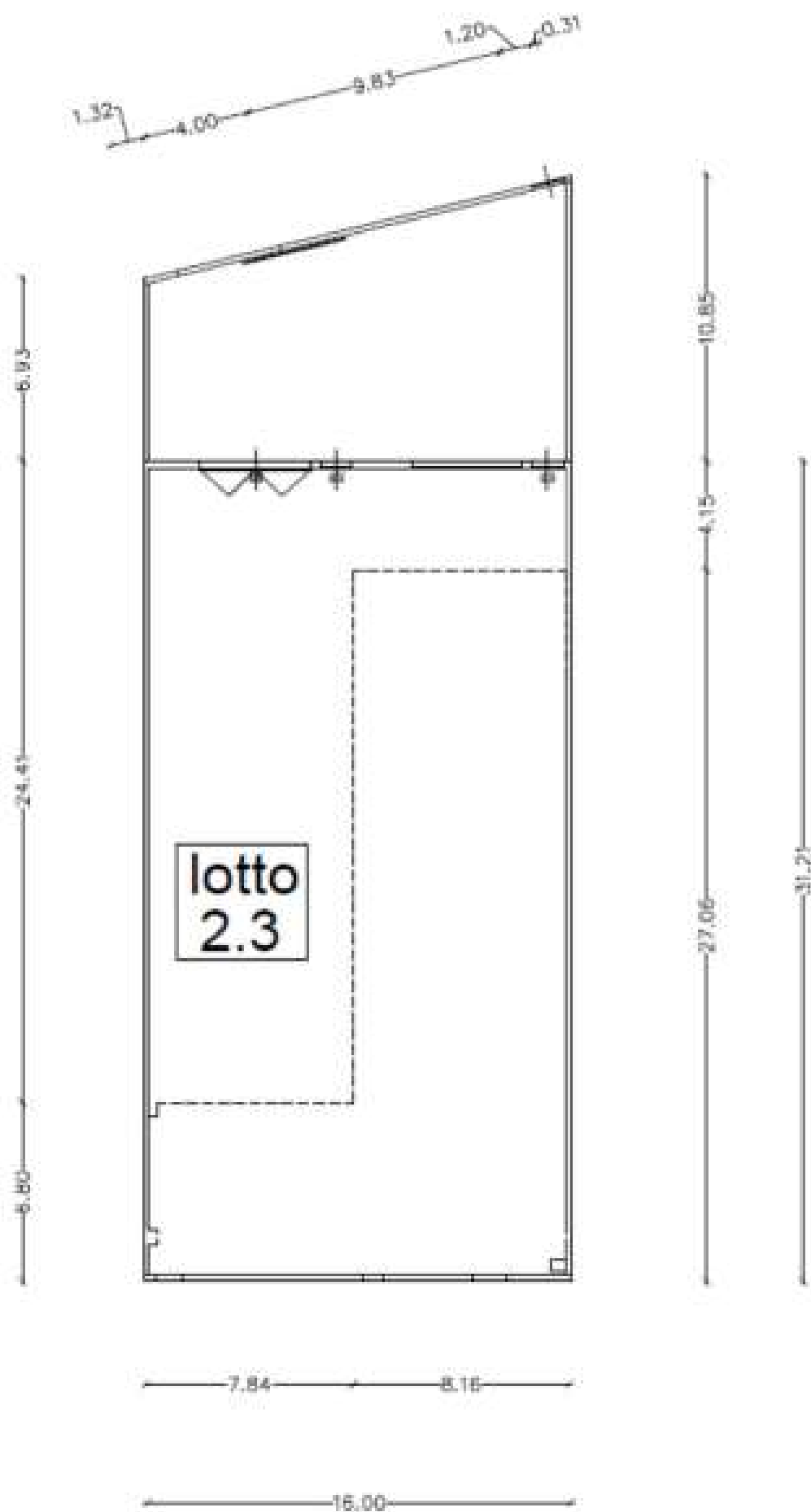
1. The first step is to identify the problem or question that needs to be answered. This involves understanding the context and the specific requirements of the task.

Source: <http://www.fishbase.org>

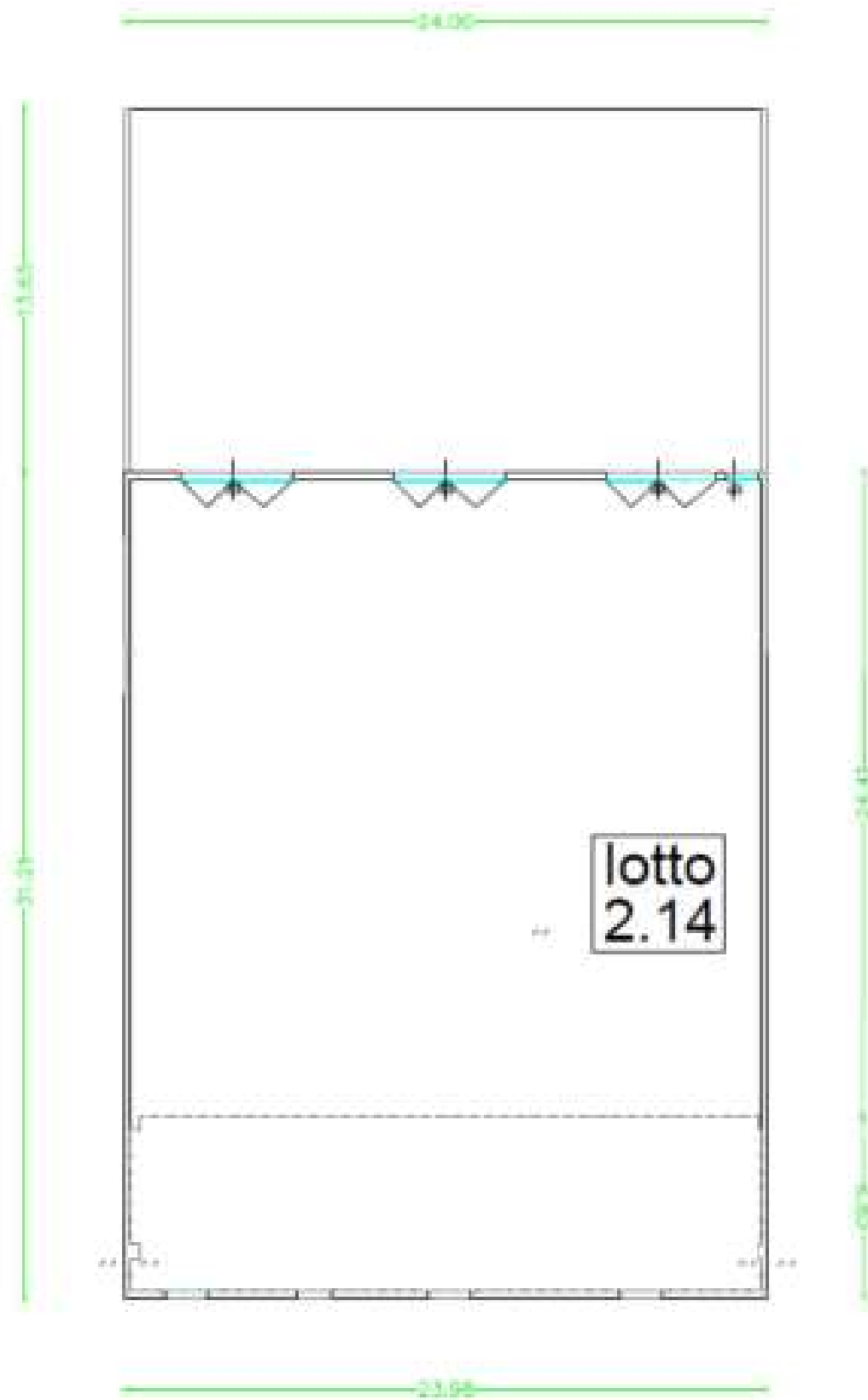
Source: <http://www.irs.gov/efile/efilefaq.html>; <http://www.irs.gov/efile/efilefaq.html>; <http://www.irs.gov/efile/efilefaq.html>

1

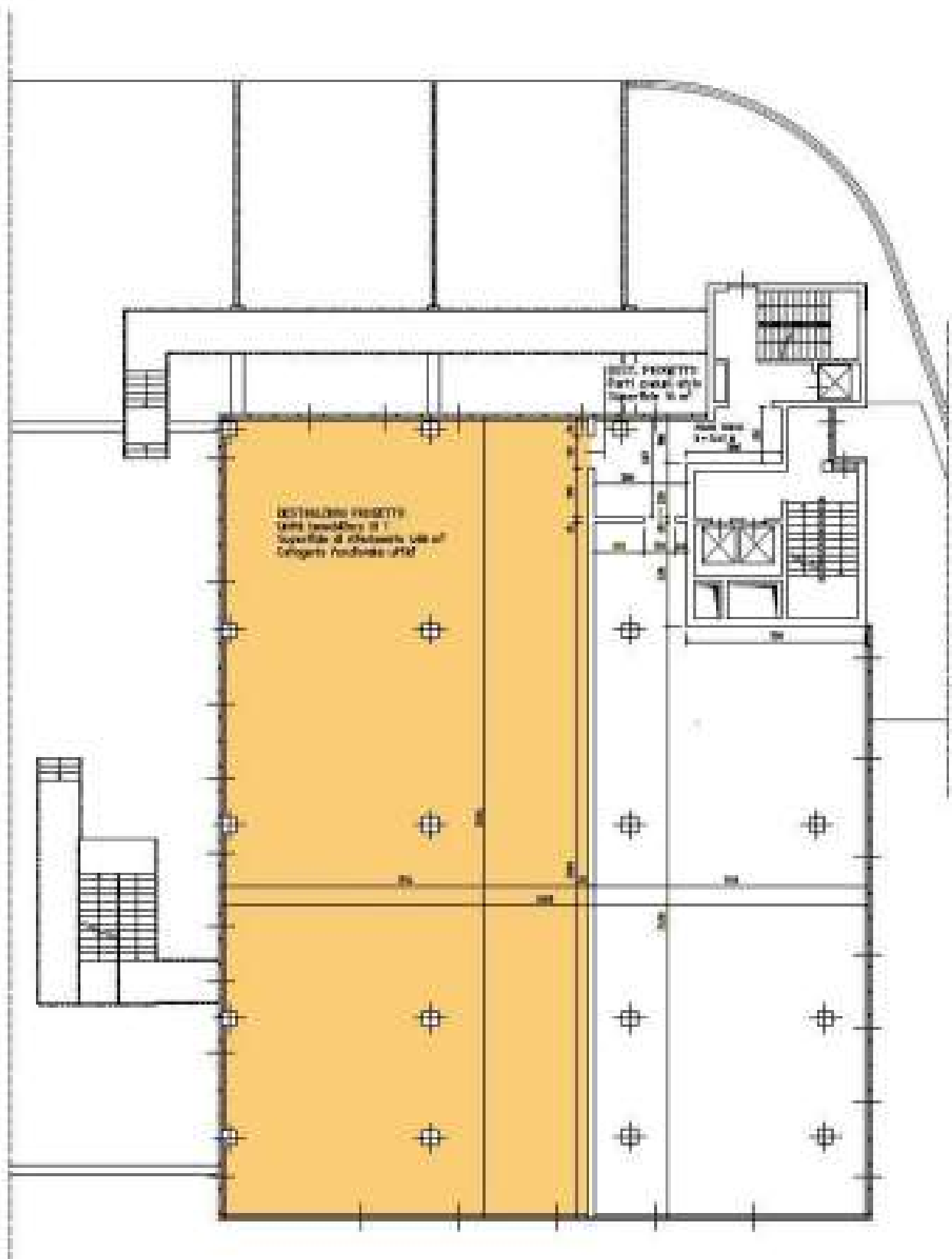
# PLANIMETRIA



# PLANIMETRIA



## PLANIMETRIA



**THE NEW YORK PUBLIC LIBRARY  
ASTOR LENOX TILDEN FOUNDATION  
500 5TH AVENUE  
NEW YORK, N.Y. 10017**

1. **Prüfungsausschuss** (Prüfungsausschuss) ist ein Gremium, das die Aufgaben der Prüfungsausschüsse wahrnimmt. Es besteht aus dem Vorsitzenden, dem stellvertretenden Vorsitzenden und weiteren Mitgliedern.

1950-1951-

64

